



What is Purpose Organic Flooring?

Purpose Floor is a highly resilient bio-based PUR (polyurethane) flooring made from natural ingredients and manufactured in an ecologically responsible facility. At its core is *ecuran*, a sustainable high-performance composite material produced from plant-based oils such as canola or castor oil and naturally occurring mineral components like chalk.

Purpose Floor was developed to create beautiful, durable, and sophisticated flooring solutions for light commercial interiors. Renewable ingredients and designs formed in nature give life to this sustainable flooring for healthy living on Purpose.

Beautiful

- A full range of wood and stone designs gives you maximum flexibility to create stunning spaces
- Large format planks with a V4 bevel and tiles with a micro-bevel edge enhance authenticity
- Ideal for corporate, retail, hospitality, and multifamily environments

Durable

- Scratch, indentation, and wear-resistant for long-lasting beauty
- High dimensional and thermal stability
- Stain resistant to some of the most stubborn chemicals
- No finishing, waxing, buffing, or stripping
- Reduces impact sound and improves sound absorption
- UV resistant

Responsible

- Product verifications include Cradle to Cradle Silver, Declare, and FloorScore
- Purpose Floor can contribute to LEED, Living Building Challenge, and WELL
- Zero harmful VOCs, complies with CDPH 01350, and entirely odorless
- Chemical-free maintenance
- No chlorine, plasticizers, solvents, or harmful pollutants



XL Plank Collection



PL295U Parasol



PL302U Poppy



PL097U Acorn



PL269U Macadamia



PL271U Hayloft



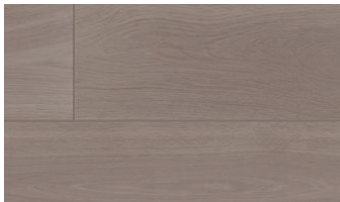
PL397U Toffee



PL272U Sienna



PL303U Cappuccino



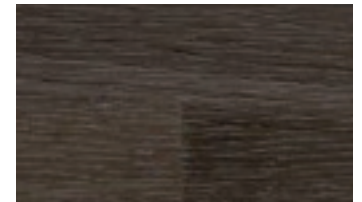
PL308U Truffle



PL084U Mocha

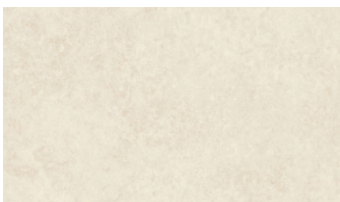


PL086U Espresso

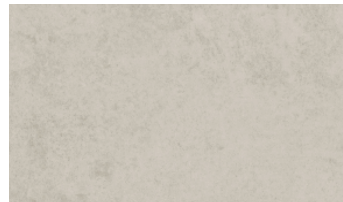


PL304U Pepper

Boulder Tile Collection



PL115U Oyster



PL116U Portobello



PL117U Pewter



PL118U Shadow

ASTM Specification Standard	F3404
Composition	Heterogeneous light commercial-rated floor covering constructed of the ArmorOx [®] system, ecuran bio-based polyurethane, and FleeceTEC [™] system backing.
XL Plank	9.84" x 59.06" (250 mm x 1500 mm); (14 planks, 56.51 ft ² per case; 56 boxes, 3164.59 ft ² per pallet)
Boulder Tile	19.69" x 39.37" (500 mm x 1000 mm); (12 tiles, 64.58 ft ² per case; 50 boxes, 3229.17 ft ² per pallet)
Thickness	2.2 mm
Weight	XL Plank 36.6 lbs./box; Boulder Tile 41.9 lbs./box
Limited Warranty	12 year